

RX7-FD3S-IGN1A / AEM Smart Coil Ignition Bracket & Wires (Frame Rail Mount, Cruise Control Compatible) AKA “The 7mount”

Thank you for purchasing this Core Components product for your car! Installation of this product should only be performed by persons experienced with installation of aftermarket performance parts and proper operation of high performance vehicles. **If vehicle needs to be raised off the ground for installation, the installer must use proper jacks, jack-stands and/or a professional vehicle hoist for safety of the installer and to protect property. If the vehicle is lifted improperly, serious injury or death may occur!** Please read through all instructions before performing any portion of this installation. **Always use appropriate personal protection equipment such as gloves, eye, and hearing protection for installation of this product.** If you have any questions, please contact our tech department prior to starting installation. email tech@ccfablab.com

Modifications to any vehicle can change the handling and performance. As with any vehicle extreme care must be used to prevent loss of control or roll-over during sharp turns or abrupt maneuvers. Always wear seat belts, and drive safely, recognizing that reduced speeds and specialized driving techniques may be required. Failure to drive a vehicle safely may result in serious injury or death. Do not drive a vehicle unless you are familiar with its unique handling characteristics and are confident of your ability to maintain control under all driving conditions. Some modifications (and combinations of modifications) are not recommended and may not be permitted in your state or country. Consult the owner’s manual, service manual, instructions accompanying these products, and local laws before purchasing and installing these modifications. You are responsible for the legality and safety of the vehicle you modify using these components.

SPECIAL NOTES:

- Installation of this part should be performed by a qualified technician
- Read through entire installation before starting this project.
- Check out or video on how to install the provided nutserts utilizing the provided tools
- Consult your tuner or qualified technician before installing this part on your car to better determine how it should be setup on your vehicle.

Threaded Insert Installation Notes: (Rivet Nut, Rivnut, Nutsert)

There are 2 nutsert provided, they both install in a similar manor. Both of these nutserts provide additional stability and help position the coil bracket so as to not interfere with any nearby steering components.

Warning! Failure to utilize these components could effect the safe operation of the vehicle.

Do not skip this step!

WARNING: This product can expose you to chemicals including Lead which is known to the State of California to cause cancer birth defects or other reproductive harm. For more information, go to www.P65Warnings.ca.gov

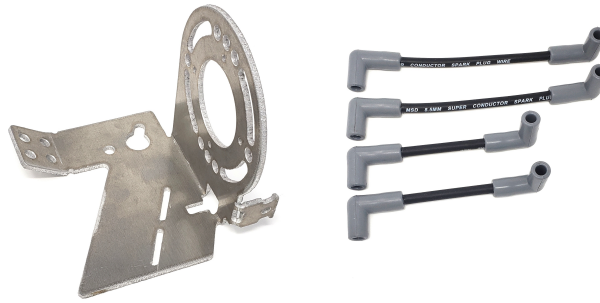
Core Components & Synaptic 3 Performance are divisions of RAD Motorsports LLC



Core Components

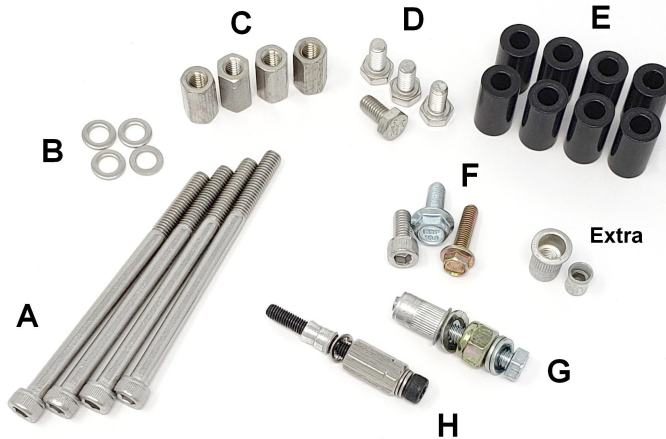
The 7mount

P/N: RX7-FD3S-IGN1A-7M-CB



Included Parts:

- (1) Unique High Quality 7 style 5052 Aluminum Bracket
- (2) 6" length low resistance ignition wires
- (2) 8" length low resistance ignition wires



Included Hardware:

- A) (4) Stainless Steel Bolts (Long)
- B) (4) Stainless Steel washers
- C) (4) Stainless Steel Couplers
- D) (4) Stainless Steel Bolts (Short)
- E) (8) Anodized spacers
- F) (1) M6 bolt, 1 M5 hex bolt, 1 M5 Allen head bolt
- G) (1) M6 Rivnut/nutsert w/installation tool (m6 bolt, 2 washers, spacer nut, lock washer)
- H) (1) M5 Rivnut/nutsert w/installation tool (m5 bolt, 2 washers, spacer nut, lock washer)

WARNING: This product can expose you to chemicals including Lead which is known to the State of California to cause cancer birth defects or other reproductive harm. For more information, go to www.P65Warnings.ca.gov

Core Components & Synaptic 3 Performance are divisions of RAD Motorsports LLC



Core Components

The 7mount

P/N: RX7-FD3S-IGN1A-7M-CB

Tools Required:

- 8 mm Combination wrench
- 10mm Combination wrench
- 11mm Combination wrench
- 13mm Combination wrench
- Small ¼ drive ratchet
- 10mm ¼ drive deep socket
- ¼ drive short extension
- 4mm allen wrench
- Optional 4mm long ball end allen socket



Chassis Prep: (See Fig 1 for reference)

- 1: Locate the m6 hole (A) in the framerail directly below the middle of the steering shaft. This will be the only hole in the framerail with a threaded hole. (If the threads look corroded run an m6 thread chaser with cutting oil or anti-seize to be sure you have clean threads)
- 2: Install provided m6 bolt all the way in and then back out so that only a few threads hold the bolt. We will come back later to tighten this bolt.
Note: m6 nutsert assembly installation; take your m6 bolt, 2 washers, nut, lockwasher + nutsert stack. Hold the nutsert tightly by hand or gently with a pliers if necessary and tighten the bolt just until there is slight tension. This will keep the nutsert from spinning when you initially start the installation into the frame.
- 4: Place the m6 nutsert into hole (B) just left of the first m6 bolt you installed.
- 5 Utilizing an m10 wrench and an m10 1/4drive socket, hold the nutsert assembly with slight pressure towards the frame-rail. While holding the m10 wrench stationary, begin to tighten the bolt head. Keep tightening until you feel slight resistance. Continue lightly applying force until you feel a hard stop. **DO NOT OVERTIGHTEN!**
- 6: Loosen the m6 bolt and remove the stack assembly.
- 7: Locate the 5mm hole (C) down and to the right of your 1st bolt. Repeat steps 3-6 for the m5 nutsert assembly. Again, **DO NOT OVERTIGHTEN!**
- 8: Install the m5 bolt all the way and then back out the thickness of the bracket material (approximately 1/8 – 3/16")

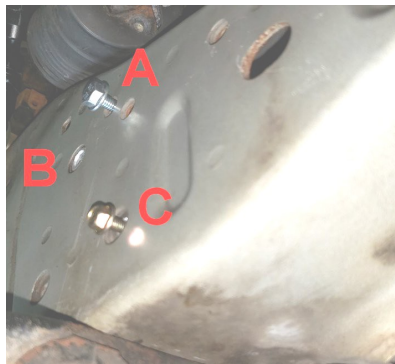


Fig 1

WARNING: This product can expose you to chemicals including Lead which is known to the State of California to cause cancer birth defects or other reproductive harm. For more information, go to www.P65Warnings.ca.gov

Core Components & Synaptic 3 Performance are divisions of RAD Motorsports LLC



Core Components

The 7mount

P/N: RX7-FD3S-IGN1A-7M-CB

Coil Assembly:

- 1: Using short m6 bolts (D) and female stainless steel couplers (C) at the 2 hole locations above and below the centerline hole. (See Fig 2 for position)
- 2: Place washers on the long M6 socket bolts
- 3: Slide the first pair of bolts through the 1st ignition coil as shown in Fig 3 (pay attention to post orientation)
- 4: Slide on 2 pairs of spacers
- 5: Slide on your second ignition coil (again paying attention to orientation)
- 6: Apply some red lock-tight to the threads of the long m6 bolts
- 7: Loosely install the coil assembly bolts, once they thread in easily you can tighten them snug with the 5mm allen wrench.
- 8: Repeat for the opposite side noting orientation in the pictures.(See Figure 4)

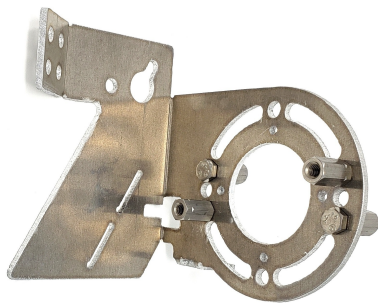


Fig 2

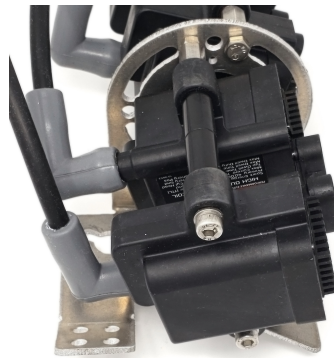


Fig 3

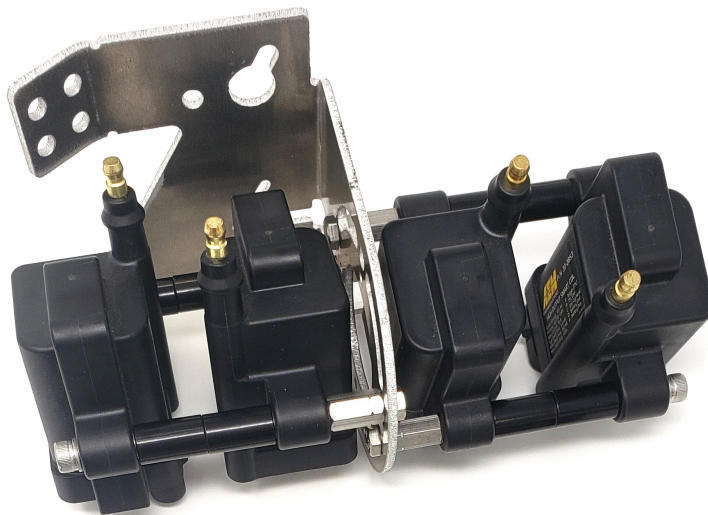


Fig 4

WARNING: This product can expose you to chemicals including Lead which is known to the State of California to cause cancer birth defects or other reproductive harm. For more information, go to www.P65Warnings.ca.gov

Core Components & Synaptic 3 Performance are divisions of RAD Motorsports LLC



Core Components

The 7mount

P/N: RX7-FD3S-IGN1A-7M-CB

Installation:

- 1: Take your new coil assembly and slide it through the space between the front of the subframe and the driver side frame-rail. (See Fig 5) Note it's a tight fit you may have to rotate the assembly as you slide it into the space above the subframe.
- 2: Now that you have the assembly within the empty space utilize the keyhole slot on the 7mount bracket to hook the assembly onto the frame-rail. (See Fig 6)
- 3: Position it at a slight 15 degree angle up toward the firewall. (see Fig 7)
- 4: Once the assembly is hooked onto the main m6 bolt swing the bracket level. This will capture the m5 bolt within the provided slot. (See Fig 8) You may have to move the m5 bolt in or out depending on where the head of the bolt resides in relation to the clearance slot on the bracket.
- 4: Locate the remaining m6 socket bolt and install into the m6 nutsert you installed earlier. (Tip: you can take a piece of paper towel and place it between the head of the bolt and the ball allen socket. Insert the allen ball head and tear away the remaining paper towel. This will give you a temporary hold on the bolt for installation into the remaining m6 hole.
- 5: Tighten the m6 bolts
- 6: Tighten the m5 bolt with an 8mm combination wrench. You should be able to access from either side with the closed end of a 12 point combination wrench.
- 7: Install the short spark plug wires to the leading coils
- 8: Install the longer spark plug wires to the trailing coils



Fig 5



Fig 7

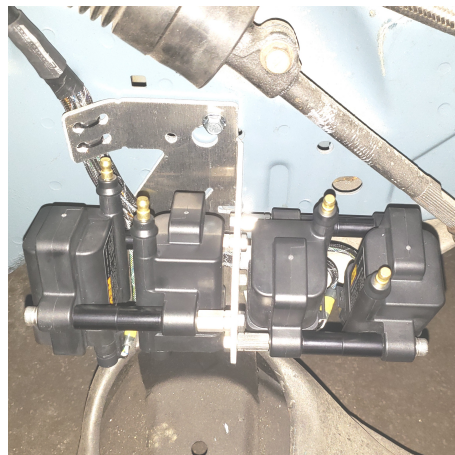


Fig 6 (wire harness pictured not included)



Fig 8

Congratulations your 7mount installation is complete!

Plug in you favorite ignition harness utilizing the provided strain relief tabs and wire tie holes. (see Fig 6)

WARNING: This product can expose you to chemicals including Lead which is known to the State of California to cause cancer birth defects or other reproductive harm. For more information, go to www.P65Warnings.ca.gov

Core Components & Synaptic 3 Performance are divisions of RAD Motorsports LLC